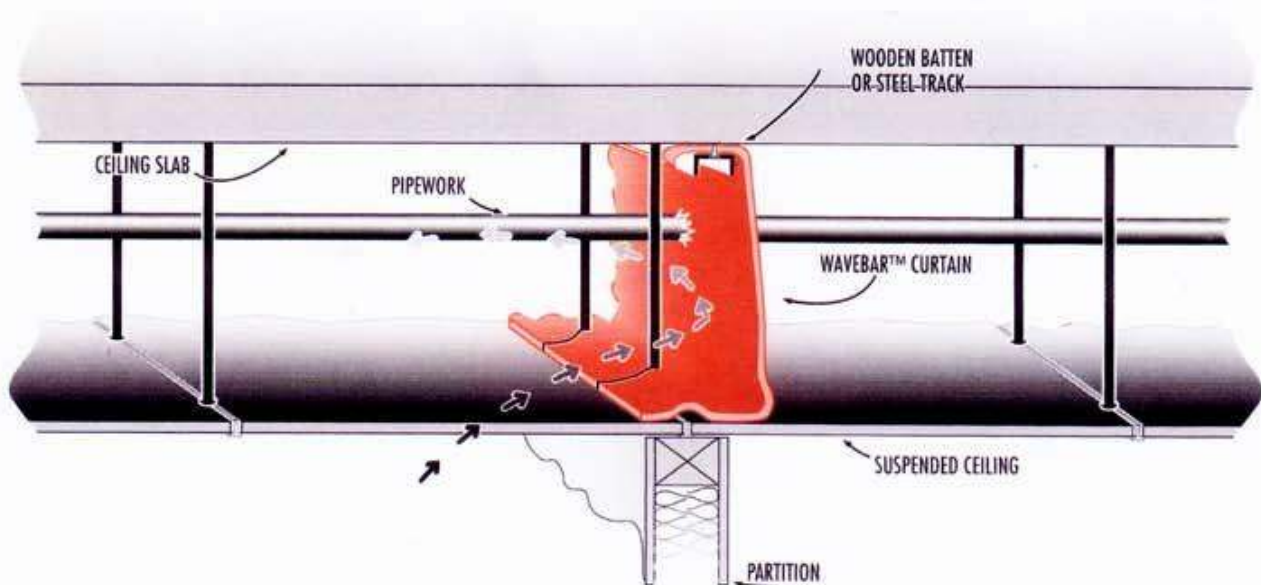


WAVEBAR™

Reduces ceiling noise dramatically



WAVEBAR barriers are dense, flexible curtains that reflect noise

- ✓ More flexible, practical and economical than full height partitions.
- ✓ Improves confidentiality by virtually eliminating noise from adjacent rooms. Provides privacy and peace of mind in director's offices, board rooms, consultation rooms, computer rooms, hallways, nurseries, etc.
- ✓ Easy to install - ideal for refurbishments. Simply suspend from slab to ceiling tiles. No additional framework is necessary.
- ✓ Proven project history. WAVEBAR has been utilised in office fitouts and refurbishments for more than 3 decades as a safe and reliable way to reduce room-to-room noise transmitted via a common ceiling.

WAVEBAR™

... Another quality product from

INSTALLATION of WAVEBAR

1 INSTALLATION TO SLAB



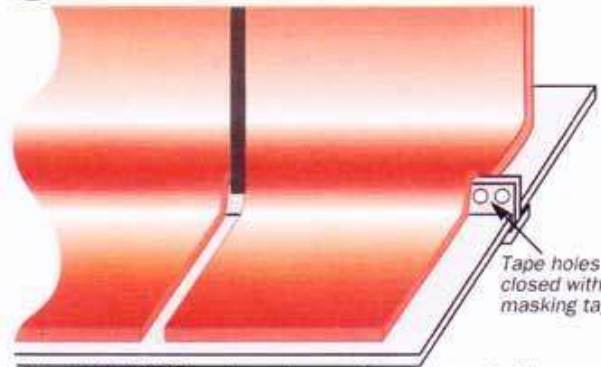
Fix metal track or batten and WAVEBAR to slab by mechanical means (e.g., masonry nails)

MASONRY ANCHOR

SILICONE/MASTIK if required

Silicone/Mastik is recommended to ensure an acoustic seal between the WAVEBAR and the slab bottom.

2 INSTALLATION TO CEILING



Tape holes closed with masking tape

Allow WAVEBAR to drape down onto ceiling on both sides of the ceiling grid (as shown). Cut around ceiling suspension hangers.

3 INSTALLATION AROUND PIPEWORK

(a) Cut a slit from edge of sheet to pipework location. Cut flange lines to diameter of pipe.



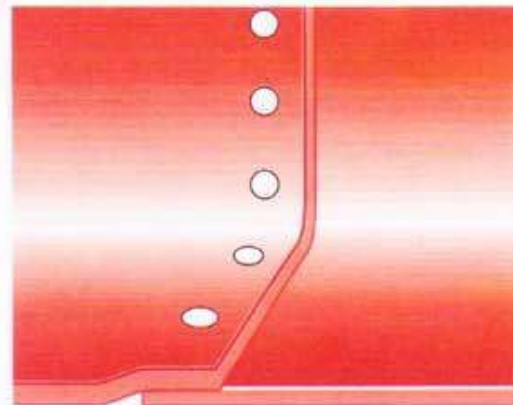
(b) Move pipe or WAVEBAR into location before closing flaps behind the pipe/ducting.



(c) Ensure all junctions of ducting and WAVEBAR are securely taped.



4 INSTALLATION JOINTS

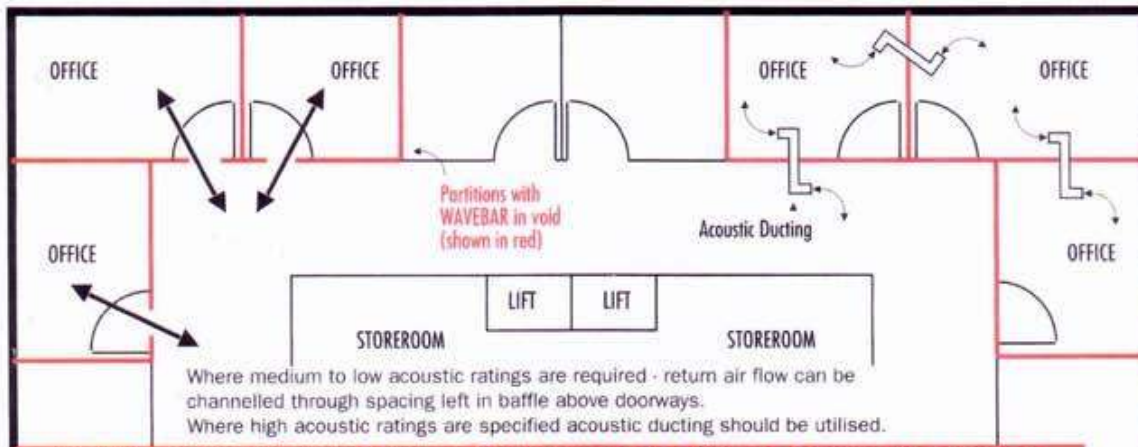


Joints should be overlapped by a minimum of 50mm and firmly secured by:

- (a) screws/rivets every 100mm
- (b) tape with screws every 300mm

Tape: TESA 4965 - 25mm wide double-sided tape

5 INSTALLATION RETURN AIR PLENUMS (suggested treatments only)



Where medium to low acoustic ratings are required - return air flow can be channelled through spacing left in baffle above doorways.
Where high acoustic ratings are specified acoustic ducting should be utilised.

NOTE: CORRECT INSTALLATION IS ESSENTIAL TO ENSURE OPTIMUM RESULTS

